

WE RISE TOGETHER

LIFTING AUSTRALIA TO BE THE GLOBAL
LEADER IN FIRE & FLOOD RESILIENCE BY 2025



**FIRE & FLOOD
RESILIENCE**

**2019-2020
TO DATE**



1500+

There were an estimated 1500 bushfires.



17 MIL+

Estimated over 17 million hectares had been burned across NSW, VIC, QLD, ACT, WA and SA



3,300

Estimated over 3,300 houses destroyed.



3 BIL+

Estimated 3 billion animals were killed or displaced.



33

Tragically 33 people lost their lives in the fires.

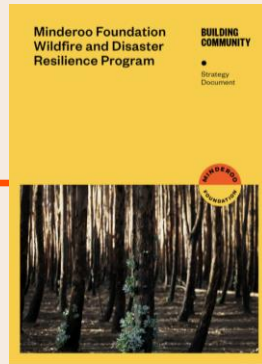
*WFF Australia July 2020

JOURNEY SO FAR - 2020

RESPONSE



RESILIENCE STRATEGY



BLUEPRINT DEVELOPMENT



FIRE SHIELD



JAN

FEB

MAR

APR

MAY

JUN

JUL

AUG

SEP



RECOVERY



RESILIENCE PILOT PROJECTS



MISSION CO-DESIGN



BLUEPRINT LAUNCH



OUR PARTNERS



OUR PARTNERS

OUR MISSIONS

Our blueprint identifies three missions, to be achieved by 2025:



FIRE SHIELD

What if a fire never became a disaster?

Mission: reduce the scale and impact of bushfires by being able to extinguish dangerous fires within an hour by 2025.



RESILIENT COMMUNITIES

What if every community had the skills and resources to mitigate their disaster risk and bounce back stronger?

Mission: lift Australia's 50 most vulnerable communities to be on par with Australia's 50 most resilient communities by 2025.



HEALTHY LANDSCAPES

What if our environment was optimised for risk reduction and natural ecosystem resilience?

Mission: halve hazard exposure in Australia's 50 most fire and flood prone regions by 2025.



Residents watch a large bushfire as seen from Bargo, 150km southwest of Sydney, on December 19, 2019.
Photo credit: Peter Parks/Contributor

FIRE SHIELD

What if a fire never became a disaster?

Mission: reduce the scale and impact of bushfires by being able to extinguish dangerous fires within an hour by 2025.



DETECT



SHARE



PREDICT



RESPOND

HEALTHY LANDSCAPES

What if our environment was optimised for risk reduction and natural ecosystem resilience?

Mission: halve hazard exposure in Australia's 50 most fire and flood prone regions by 2025



**LANDSCAPE
KNOWLEDGE**



**LANDSCAPE
ACTION**



**LANDSCAPE
INVESTMENT**

RESILIENT COMMUNITIES

What if every community had the skills and resources to mitigate their fire and flood disaster risk and bounce back stronger?

Mission: lift Australia's 50 most vulnerable communities to be on par with Australia's 50 most resilient communities by 2025.



LEADERSHIP



KNOWLEDGE



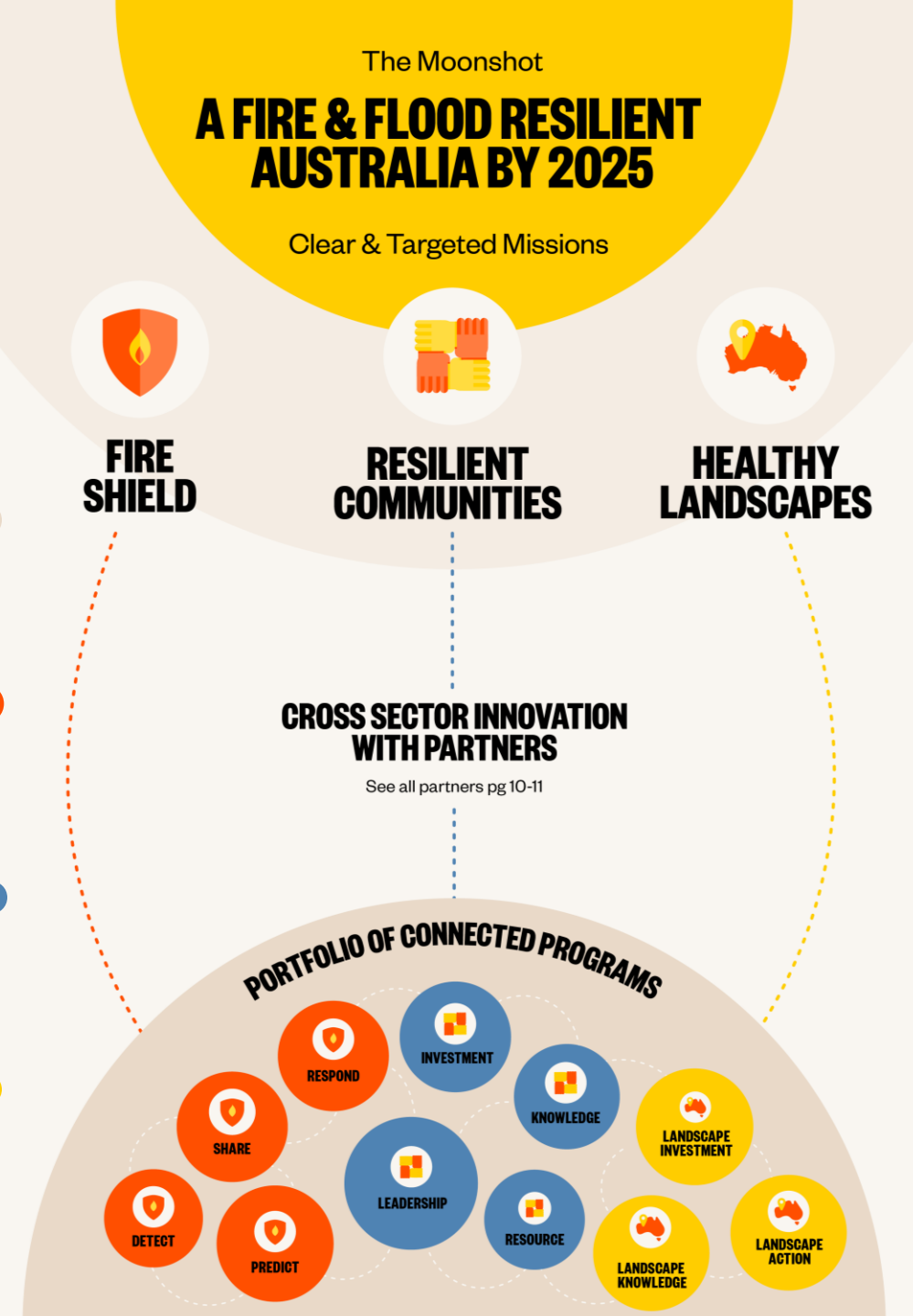
RESOURCES



INVESTMENT

MISSION PARTNERS

Example of collaboration types



RESILIENCE DATA COLLECTIVE



Strategy and Model

To create an ecosystem of partners and providers that contribute to ongoing evidence base development for mission strategy and use case validation by:

- Facilitating requirements gathering
- Engaging experts
- Assembling contributing partners
- Support data standards and sharing
- Delivering tools and reports

Pillars of Work



Evidence

- The information needed to guide strategy and priorities
- Validation that we've hit our targets



Standards

- Establish a common way to represent and interpret information



Sharing

- Connecting the right organisations to collaborate
- Facilitating access to data to support use cases



Technology

- Platforms and tools to combine or represent new information or existing information in new ways

Resilience Data Collective

Resilience Data Collective



Use Cases

Ecosystem Map

Sharing

Illustrate the data infrastructure and stakeholders in the fire and flood disaster resilience ecosystem to support the initiative, missions, and partners to identify gaps, identify opportunities and creation of value.

Community Asset Data

Standards

High risk regions have a standardised database of community assets with key attributes and relative importance available for designing preparedness, response and recovery to fire and flood.

Data Standards/ Sharing

Standards

Support common operating picture for community scale resilience, response, and recovery by defining data standards and sharing across jurisdictions.

Decision Support

Evidence

Data and analysis of bushfire hazard risk exposure, vulnerability, and resilience levels to provide the FFRI initiative, partners, and ecosystem stakeholders with tools to inform resilience investments.

WE RISE TOGETHER

LIFTING AUSTRALIA TO BE THE GLOBAL
LEADER IN FIRE & FLOOD RESILIENCE BY 2025



**FIRE & FLOOD
RESILIENCE**